

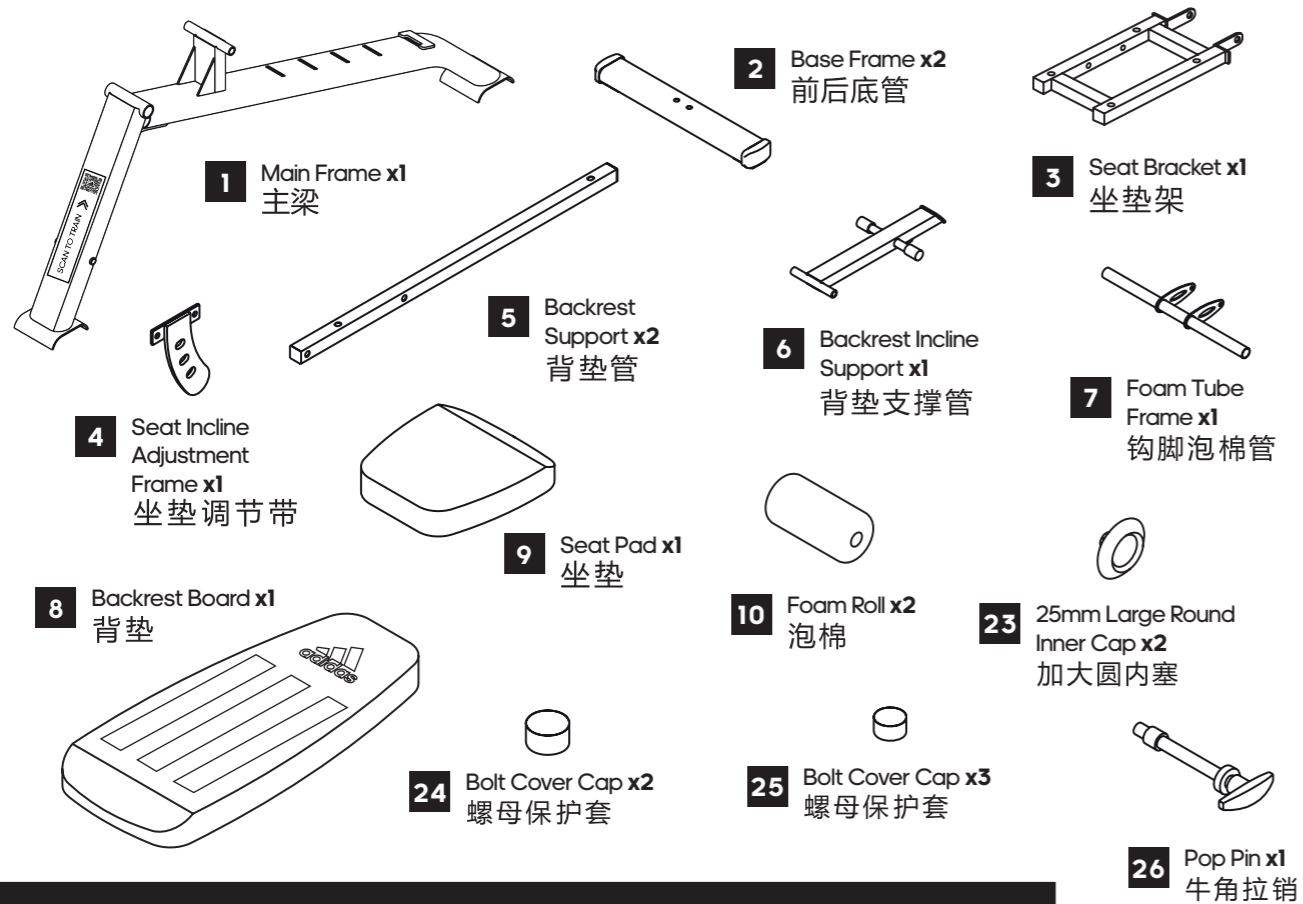
ADBE-10225

UTILITY BENCH 多用途训练椅

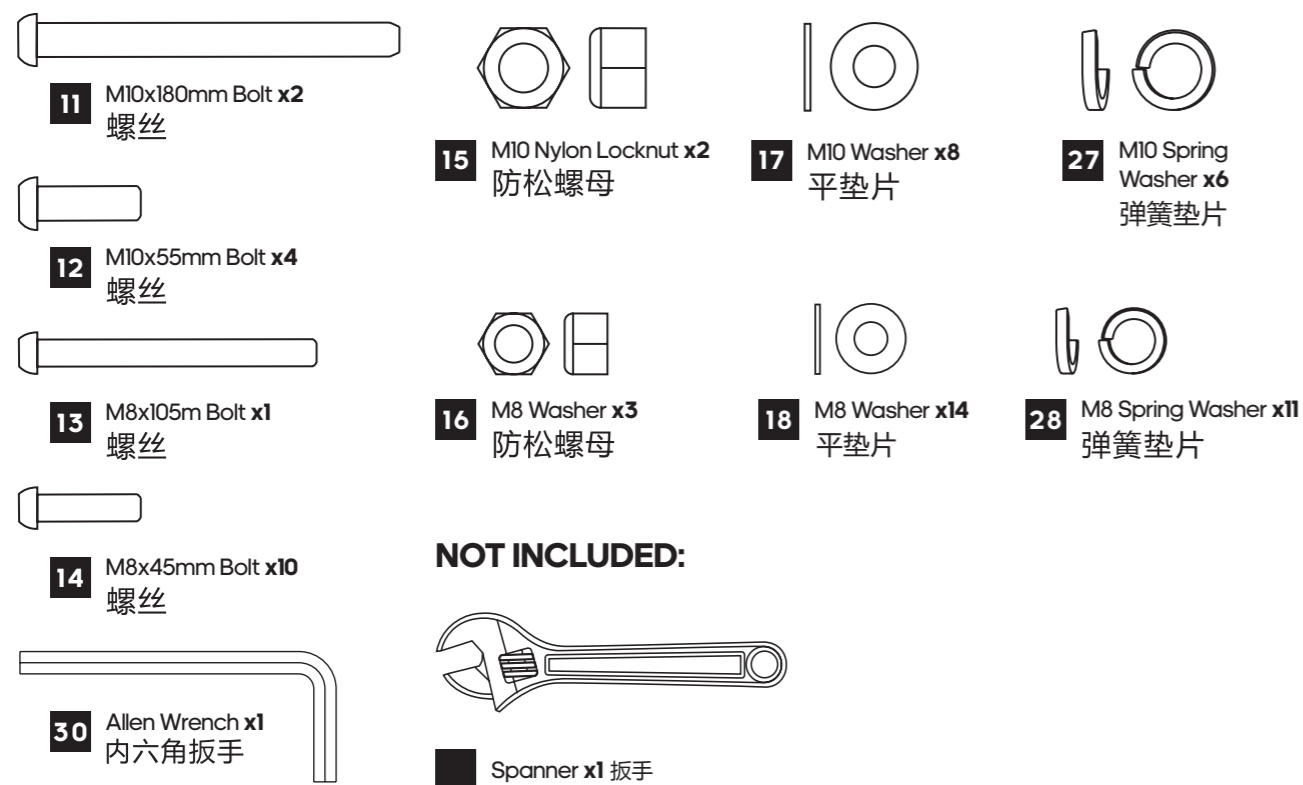
ASSEMBLY MANUAL 组装手册



PARTS LIST 零件清单

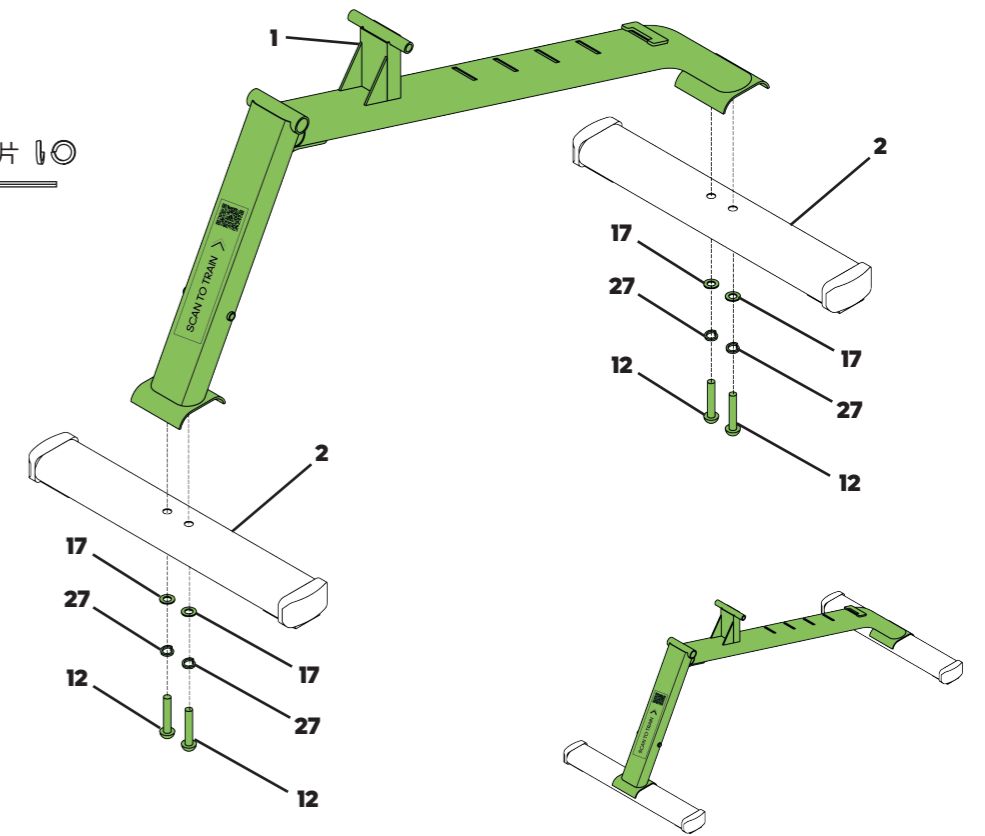


HARDWARE PACK 零件包



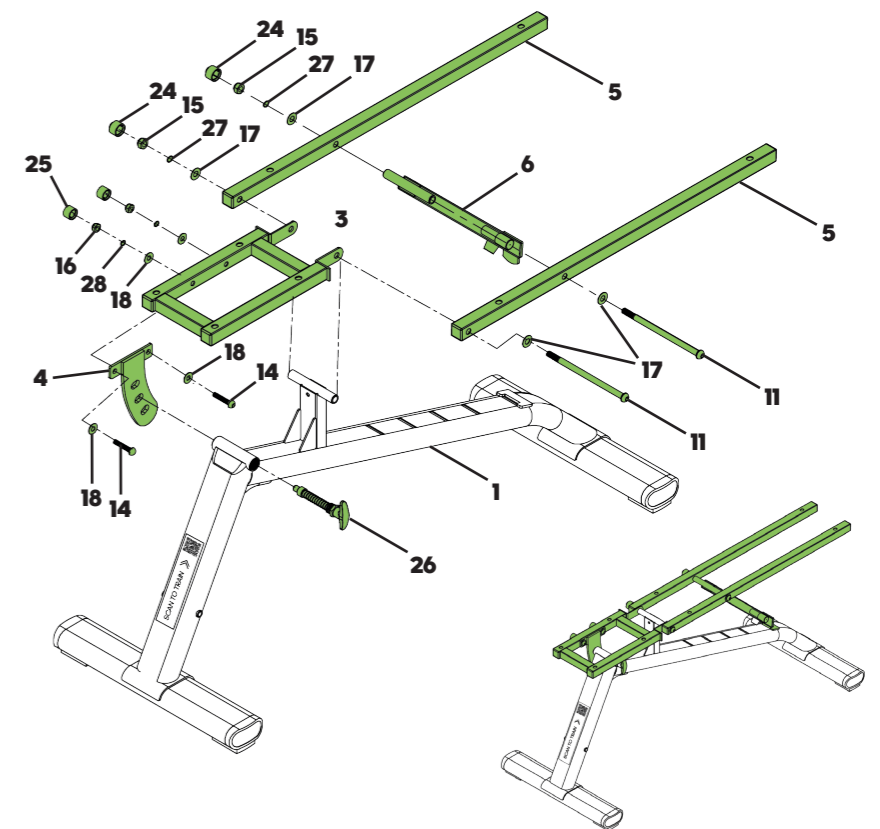
01

- 12** M10x55mm Bolt x4 螺丝
- 17** M10 Washer x4 平垫片
- 27** M10 Spring Washer x4 弹簧垫片
- 30** Allen Wrench x1 内六角扳手



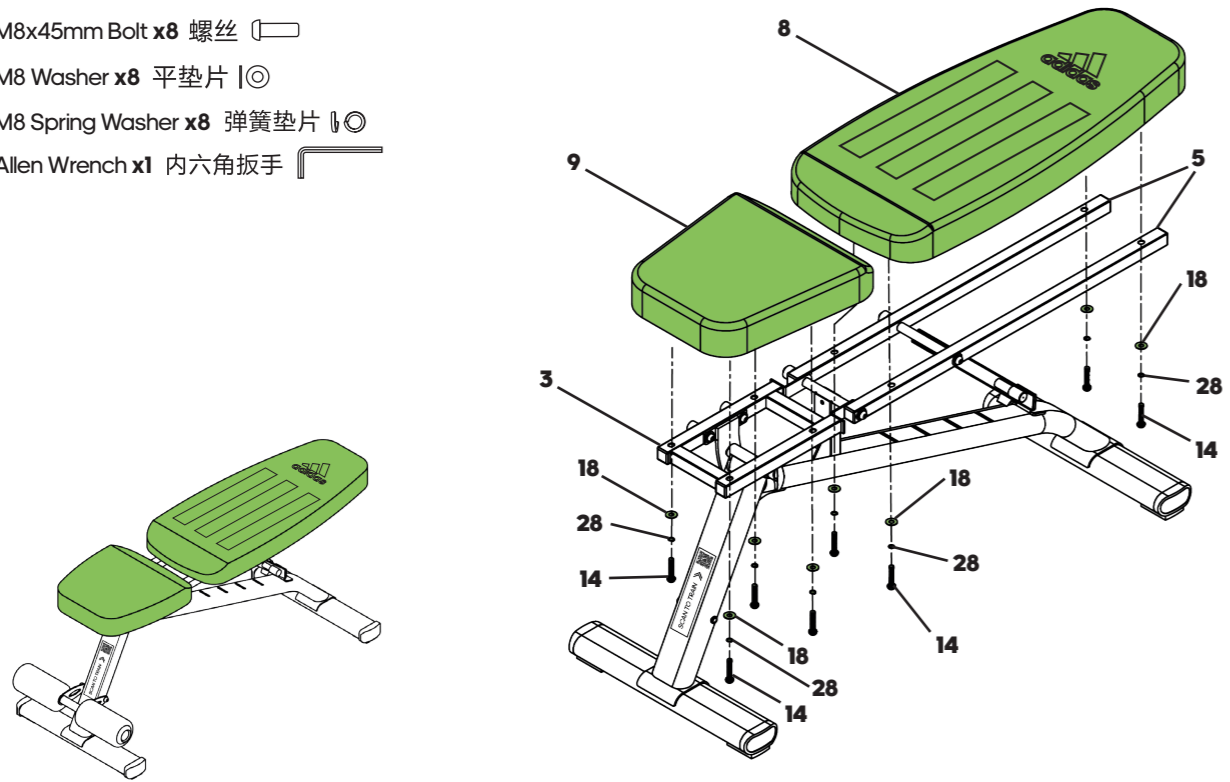
02

- 11** M10x180mm Bolt x2 螺丝
- 14** M8x45mm Bolt x2 螺丝
- 15** M10 Nylon Locknut x2 防松螺母
- 16** M8 Nylon Locknut x2 防松螺母
- 17** M10 Washer x4 平垫片
- 18** M8 Washer x4 平垫片
- 24** Bolt Cover Cap x2 螺母保护套
- 25** Bolt Cover Cap x2 螺母保护套
- 27** M10 Spring Washer x2 弹簧垫片
- 28** M8 Spring Washer x2 弹簧垫片
- 30** Allen Wrench x1 内六角扳手
- Spanner x1 扳手



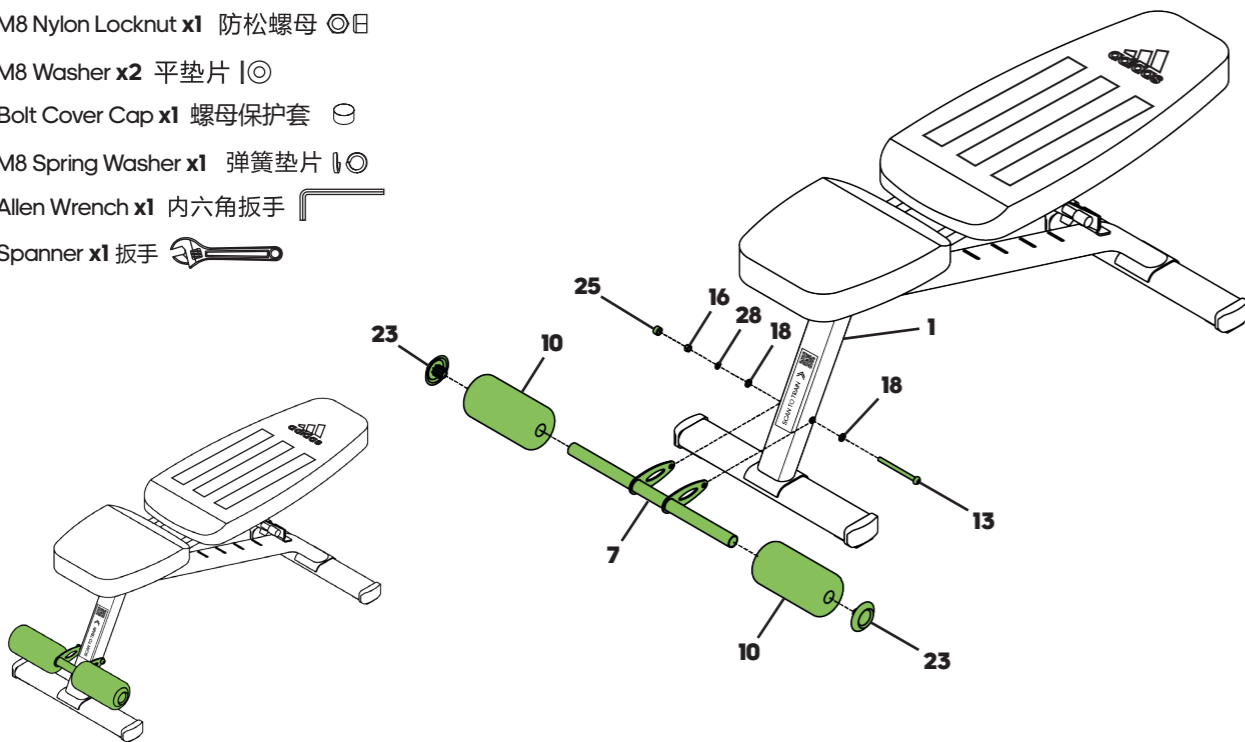
03

- 14 M8x45mm Bolt x8 螺丝
- 18 M8 Washer x8 平垫片
- 28 M8 Spring Washer x8 弹簧垫片
- 30 Allen Wrench x1 内六角扳手

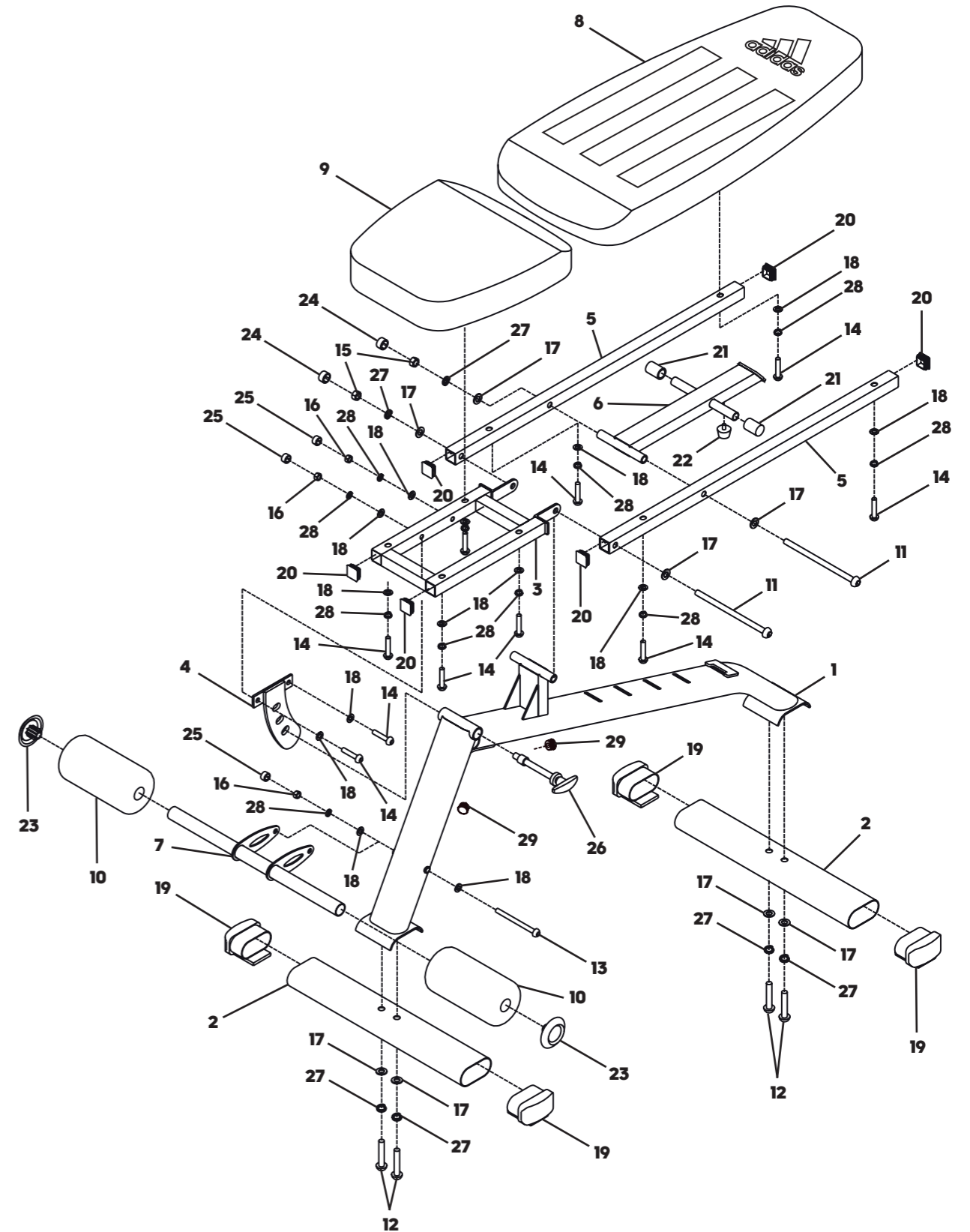


04

- 13 M8x105m Bolt x1 螺丝
- 16 M8 Nylon Locknut x1 防松螺母
- 18 M8 Washer x2 平垫片
- 25 Bolt Cover Cap x1 螺母保护套
- 28 M8 Spring Washer x1 弹簧垫片
- 30 Allen Wrench x1 内六角扳手
- Spanner x1 扳手



EXPLODED VIEW 分解图



PARTS LIST 零件清单

No. 编号	Code 零件代号	Description 零件名称	QTY 数量
1	FMAD614-01	Main Frame 主梁	1
2	FMAD611-02	Base Frame 前后底管	2
3	FMAD614-02	Seat Bracket 坐垫架	1
4	FMAD614-03	Seat Incline Adjustment Frame 坐垫调节带	1
5	FMAD614-04	Backrest Support 背垫管	2
6	FMAD614-05	Backrest Incline Support 背垫支撑管	1
7	FMAD611-08	Foam Tube Frame 钩脚泡棉管	1
8	FMAD614-06	Backrest Board 背垫	1
9	FMAD614-07	Seat Pad 坐垫	1
10	FMAD614AB-16	Foam Roll 泡棉	2
11	FMAD614-08	M10x180mm Bolt 螺丝	2
12	PFMCS704MF-13	M10x55mm Bolt 螺丝	4
13	FMAD611-11	M8x105mm Bolt 螺丝	1
14	PFMS80-32	M8x45mm Bolt 螺丝	10
15	PRK1-05	M10 Nylon Locknut 防松螺母	2
16	PHHKRK6-10	M8 Nylon Locknut 防松螺母	3
17	PRK1-06	M10 Washer 平垫片	8
18	PFM2006-27	M8 Washer 平垫片	14
19	PFMH1001-21	40x80mm Ellipse End Cap 椭圆外脚套	4
20	PFM2240-32	25mm Square End Cap 方内塞	6
21	FMAD614AB-21	16mm Round Angled Cap 圆外套	2
22	PMFS80WA-30	Rubber Ring 橡皮垫块	1
23	FMAD614AB-22	25mm Large Round Inner Cap 加大圆内塞	2
24	FMAD614AB-23	Bolt Cover Cap 螺母保护套	2
25	FMAD611-12	Bolt Cover Cap 螺母保护套	3
26	FMAD614-09	Pop Pin 牛角拉销	1
27	FMAD613-06	M10 Spring Washer 弹簧垫片	6
28	FMAD613-07	M8 Spring Washer 弹簧垫片	11
29	FMAD614-10	19mm Round Inner Cap 19mm内塞	2
30	PFMALLN	Allen Wrench 内六角扳手	1

USER INFORMATION 用户信息

THIS PRODUCT IS SUITABLE FOR
USER'S WEIGHT OF **125KG**

此产品适合用户体重**125公斤**



THIS PRODUCT IS SUITABLE FOR A
MAX LOAD OF **175KG**

此产品适合最大负载**175KG**



Product Registration and Support
Enregistrement et support du produit
Productregistratie en ondersteuning
Registro de productos y soporte
Registro de produto e suporte
Регистрация и поддержка продукта
製品の登録とサポート



معدداو جت نم لا لي ج ست

产品注册和技术支持

제품 등록 및 지원

WWW.ADIDASHARDWARE.COM/PRODUCT-SUPPORT



UTILITY BENCH

多用途训练椅

For product information or service please contact:

UK: RFE Europa Ltd. 8 Clarendon Drive, Wymbush, Milton Keynes, MK8 8ED.

Email: techsupport@rfeinternational.com Customer Service: Tel: +44 (0)800 440 2459

Europe: serviceeuropa@rfeinternational.com Customer Service: Tel: +49 800 182 8532

Spain: serviciotecnico@rfeinternational.com Customer Service: Tel: +34 800 600 816

Germany: techsupporteu@rfeinternational.com Customer Service: Tel: +34 800 600 816

APAC (excluding Australia): RFE Asia Pacific, 2608-1609, 1 Hung To Road, Kwun Tong, Kowloon, Hong Kong.

Email: techsupportapac@rfeinternational.com Customer Service: Tel: +852 34685027

Australia: techsupportaustralia@rfeinternational.com Customer Service: Tel: +852 34685027

USA: RFE Sporting Goods Inc., 1300 Smith Road, STE 104, Austin, Texas, 78721, USA.

Email: techsupportusa@rfeinternational.com Customer Service: Tel: +1 (800) 215 6216+852

China: 上海市宝山区爱辉路201号 智航创新园 1座 1601 A室, 上海锐达健身科技发展有限公司

Email: techsupportchina@rfeinternational.com Customer Service: Tel: 4001027768